

Akiko's Stim Cube

I designed a knitting pattern for a textured cube that features a purl texture pattern and is stretched around a cardboard frame. It is inspired by the character of Akiko from Aetherglow, and each face of the cube has a design based on one of her interests – there is a bug, a bird, a cat, a flower, a mushroom, and the Japanese character for Akiko's name.

Using worsted weight yarn, this cube came out measuring 7" on each side. I recommend using thinner yarn at a tighter gauge if you want a smaller cube. Once you have knitted all six squares, measure one of the squares and cut six cardboard squares of the same measurement. Tape the cardboard together to form a cube, then sew the knitted squares into a cube around the cardboard frame.

Each square will be 28 stitches and 40 rows, knitted back and forth. To start, cast on 28 stitches and knit 4 rows (2 ridges of garter stitch). Then, follow the chart for the center 24 stitches and always knit the first and last two stitches, even if you are on a purl row. When you are finished with the chart, knit 4 rows. The colored stitches are purled on right side rows and knitted on wrong side rows. Here are the written instructions and the visual charts, for maximum accessibility.

Mushroom:

Cast on 28 stitches

Knit 4 rows

Begin chart:

Row 1: Knit 28

Row 2: Knit 2, Purl 24, Knit 2

Row 3: Knit 11, Purl 6, Knit 11

Row 4: Knit 2, Purl 9, Knit 6, Purl 9, Knit 2

Row 5: Knit 11, Purl 6, Knit 11

Row 6: Knit 2, Purl 9, Knit 6, Purl 9, Knit 2

Row 7: Knit 11, Purl 6, Knit 11

Row 8: Knit 2, Purl 9, Knit 6, Purl 9, Knit 2

Row 9: Knit 11, Purl 6, Knit 11

Row 10: Knit 2, Purl 9, Knit 6, Purl 9, Knit 2

Row 11: Knit 11, Purl 6, Knit 11

Row 12: Knit 2, Purl 9, Knit 6, Purl 9, Knit 2

Row 13: Knit 11, Purl 6, Knit 11

Row 14: Knit 2, Purl 9, Knit 6, Purl 9, Knit 2

Row 15: Knit 4, Purl 20, Knit 4

Row 16: Knit 2, Purl 2, Knit 20, Purl 2, Knit 2

Row 17: Knit 4, Purl 20, Knit 4

Row 18: Knit 2, Purl 3, Knit 18, Purl 3, Knit 2

Row 19: Knit 5, Purl 18, Knit 5

Row 20: Knit 2, Purl 4, Knit 16, Purl 4, Knit 2

Row 21: Knit 6, Purl 16, Knit 6

Row 22: Knit 2, Purl 5, Knit 14, Purl 5, Knit 2

Row 23: Knit 8, Purl 12, Knit 8

Row 24: Knit 2, Purl 6, Knit 12, Purl 6, Knit 2

Row 25: Knit 9, Purl 10, Knit 9

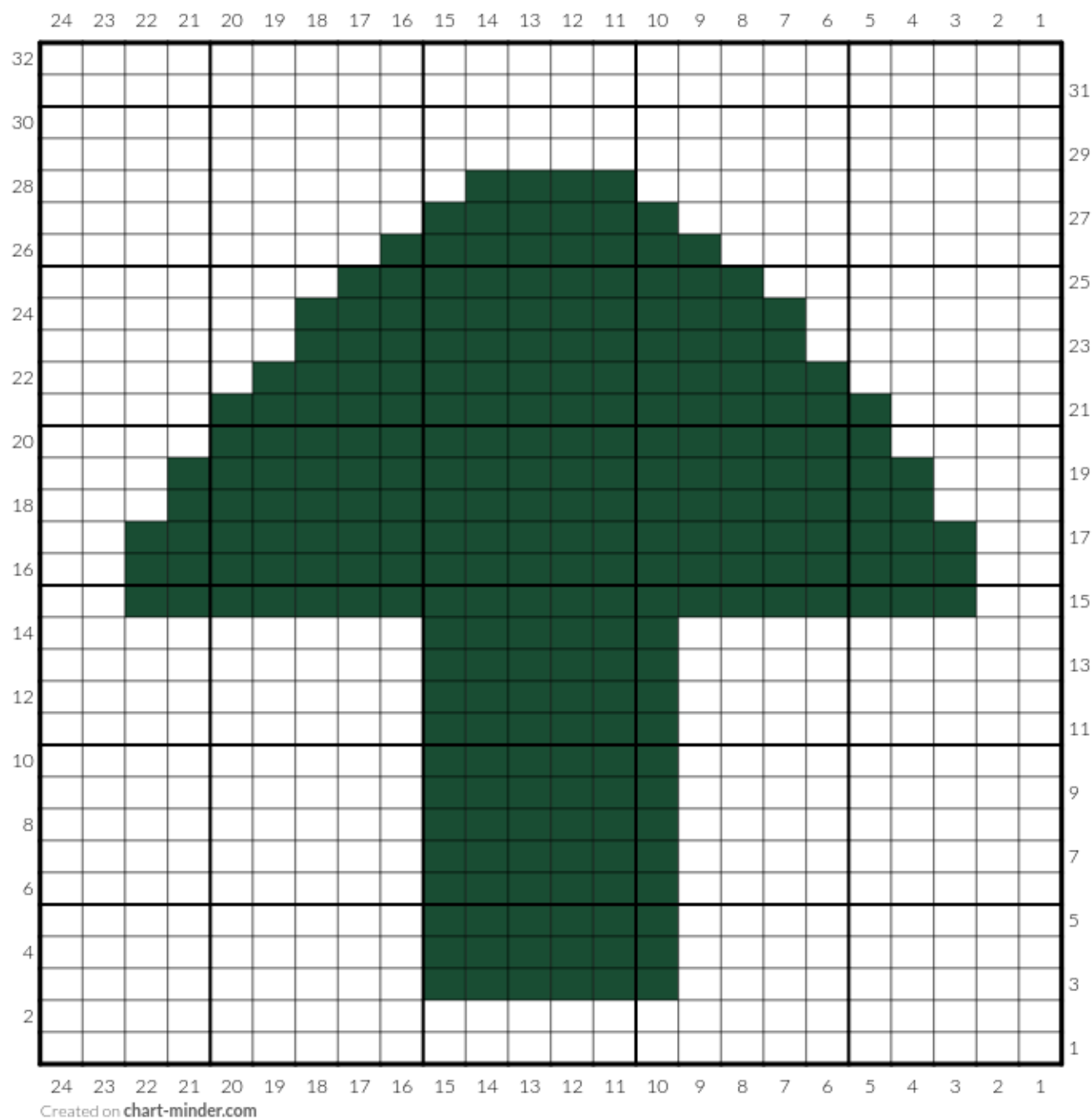
Row 26: Knit 2, Purl 8, Knit 8, Purl 8, Knit 2

Row 27: Knit 11, Purl 6, Knit 11

Row 28: Knit 2, Purl 10, Knit 4, Purl 10, Knit 2

Row 29: Knit 28

Row 30: Knit 2, Purl 24, Knit 2
 Row 31: Knit 28
 Row 32: Knit 2, Purl 24, Knit 2
 Knit 4 more rows
 Bind off



Flower:
 Cast on 28 stitches
 Knit 4 rows

Begin chart:

Row 1: Knit 13, Purl 2, Knit 13

Row 2: Knit 2, Purl 11, Knit 2, Purl 11, Knit 2

Row 3: Knit 13, Purl 2, Knit 13

Row 4: Knit 2, Purl 11, Knit 2, Purl 11, Knit 2

Row 5: Knit 13, Purl 2, Knit 13

Row 6: Knit 2, Purl 11, Knit 2, Purl 11, Knit 2

Row 7: Knit 10, Purl 2, Knit 1, Purl 2, Knit 1, Purl 2, Knit 10

Row 8: Knit 2, Purl 7, Knit 10, Purl 7, Knit 2

Row 9: Knit 8, Purl 12, Knit 8

Row 10: Knit 2, Purl 6, Knit 12, Purl 6, Knit 2

Row 11: Knit 8, Purl 4, Knit 1, Purl 2, Knit 1, Purl 4, Knit 8

Row 12: Knit 2, Purl 7, Knit 2, Purl 2, Knit 2, Purl 2, Knit 2, Purl 7, Knit 2

Row 13: Knit 13, Purl 2, Knit 13

Row 14: Knit 2, Purl 7, Knit 2, Purl 2, Knit 2, Purl 2, Knit 2, Purl 7, Knit 2

Row 15: Knit 8, Purl 4, Knit 1, Purl 2, Knit 1, Purl 4, Knit 8

Row 16: Knit 2, Purl 6, Knit 12, Purl 6, Knit 2

Row 17: Knit 8, Purl 5, Knit 2, Purl 5, Knit 8

Row 18: Knit 2, Purl 7, Knit 3, Purl 4, Knit 3, Purl 7, Knit 2

Row 19: Knit 10, Purl 1, Knit 6, Purl 1, Knit 10

Row 20: Knit 2, Purl 7, Knit 2, Purl 6, Knit 2, Purl 7, Knit 2

Row 21: Knit 8, Purl 3, Knit 6, Purl 3, Knit 8

Row 22: Knit 2, Purl 5, Knit 5, Purl 4, Knit 5, Purl 5, Knit 2

Row 23: Knit 7, Purl 6, Knit 2, Purl 6, Knit 7

Row 24: Knit 2, Purl 5, Knit 4, Purl 1, Knit 4, Purl 1, Knit 4, Purl 5, Knit 2

Row 25: Knit 8, Purl 2, Knit 2, Purl 4, Knit 2, Purl 2, Knit 8

Row 26: Knit 2, Purl 10, Knit 4, Purl 10, Knit 2

Row 27: Knit 12, Purl 4, Knit 12

Row 28: Knit 2, Purl 10, Knit 4, Purl 10, Knit 2

Row 29: Knit 13, Purl 2, Knit 13

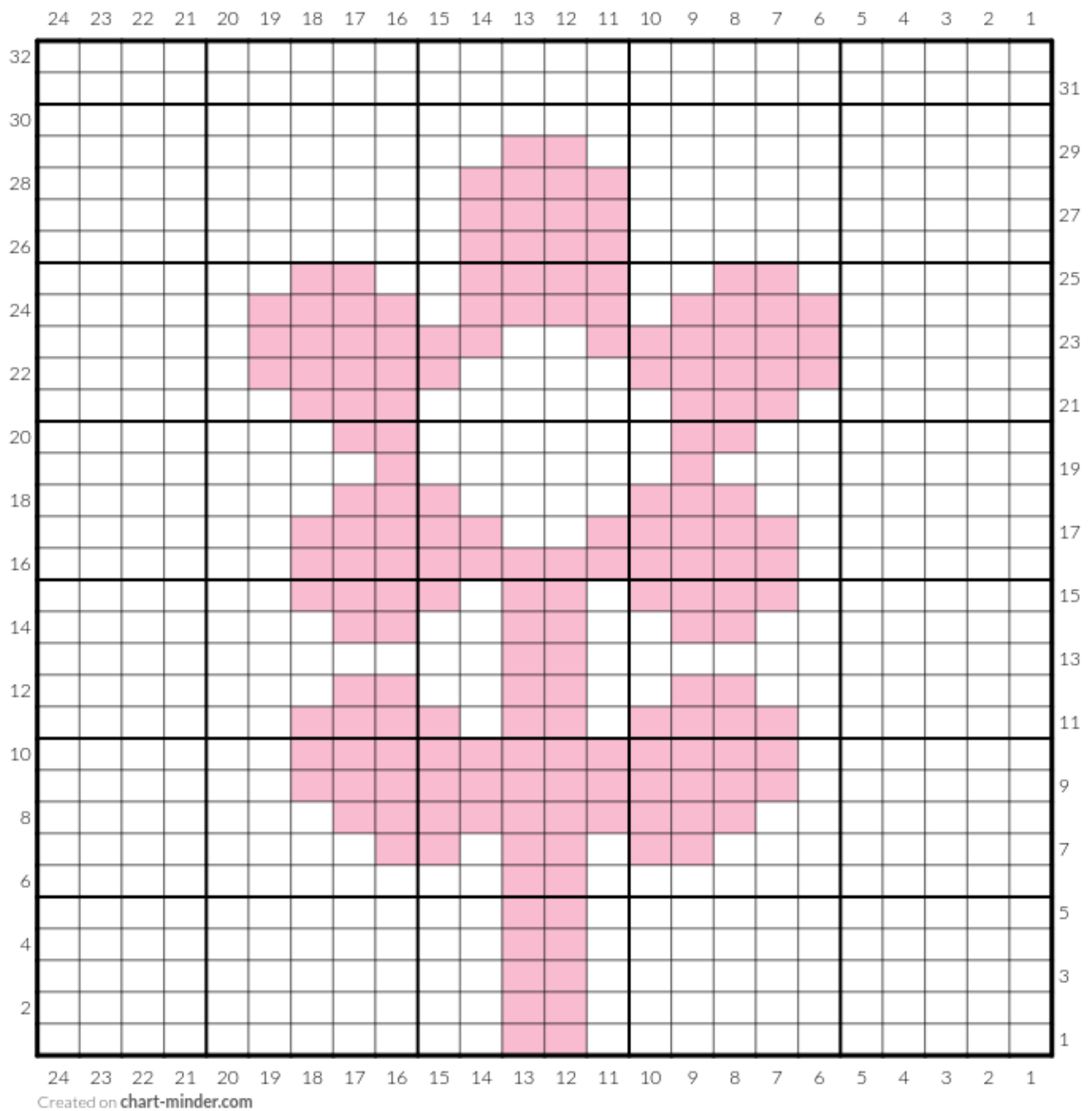
Row 30: Knit 2, Purl 24, Knit 2

Row 31: Knit 28

Row 32: Knit 2, Purl 24, Knit 2

Knit 4 more rows

Bind off



Cat:

Cast on 28 stitches

Knit 4 rows

Begin chart:

Row 1: Knit 28

Row 2: Knit 2, Purl 24, Knit 2

Row 3: Knit 28

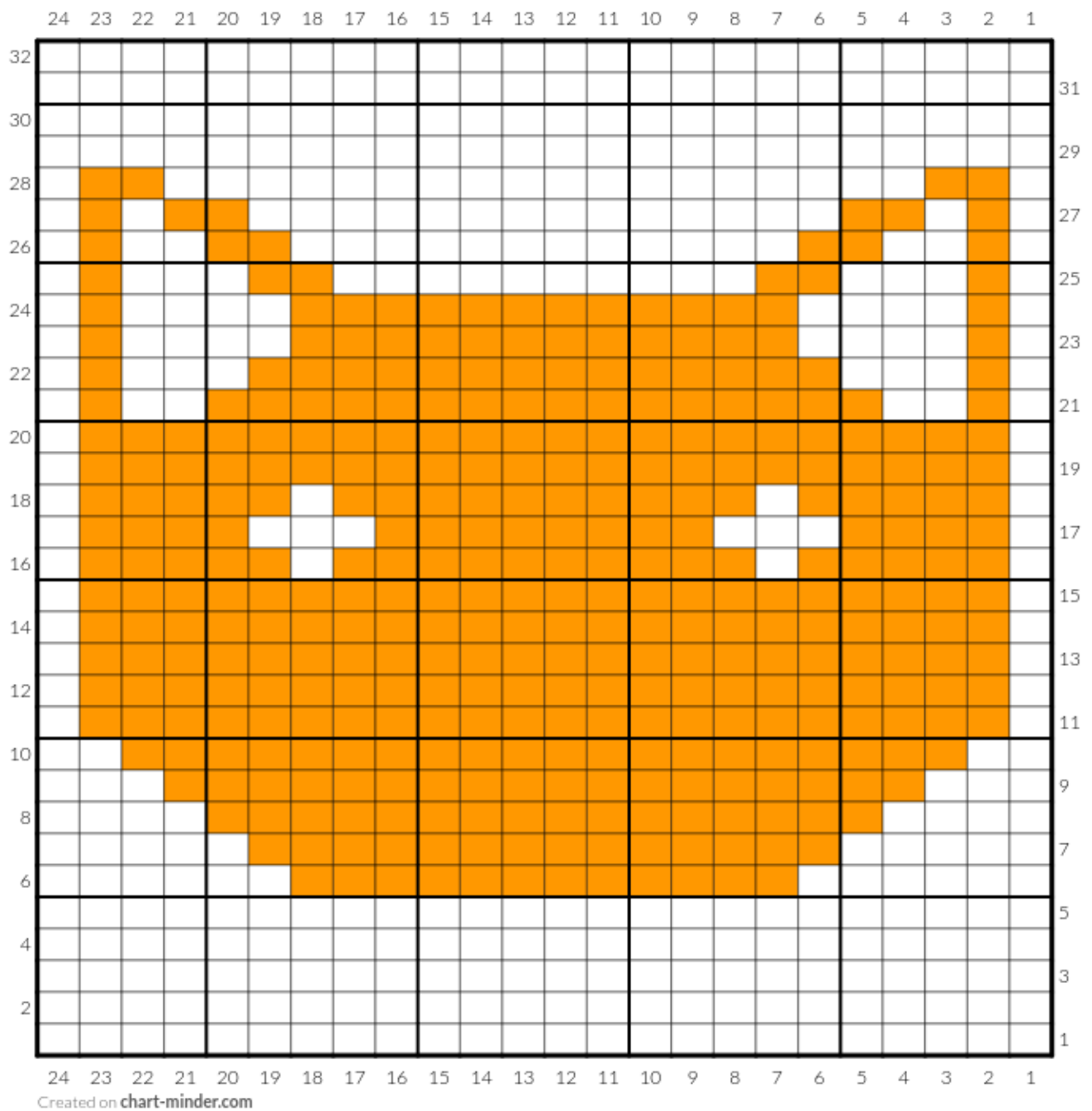
Row 4: Knit 2, Purl 24, Knit 2

Row 5: Knit 28

Row 6: Knit 2, Purl 6, Knit 12, Purl 6, Knit 2

Row 7: Knit 7, Purl 14, Knit 7

Row 8: Knit 2, Purl 4, Knit 16, Purl 4, Knit 2
Row 9: Knit 5, Purl 18, Knit 5
Row 10: Knit 2, Purl 2, Knit 20, Purl 2, Knit 2
Row 11: Knit 3, Purl 22, Knit 3
Row 12: Knit 2, Purl 1, Knit 22, Purl 1, Knit 2
Row 13: Knit 3, Purl 22, Knit 3
Row 14: Knit 2, Purl 1, Knit 22, Purl 1, Knit 2
Row 15: Knit 3, Purl 22, Knit 3
Row 16: Knit 2, Purl 1, Knit 5, Purl 1, Knit 10, Purl 1, Knit 5, Purl 1, Knit 2
Row 17: Knit 3, Purl 4, Knit 3, Purl 8, Knit 3, Purl 4, Knit 3
Row 18: Knit 2, Purl 1, Knit 5, Purl 1, Knit 10, Purl 1, Knit 5, Purl 1, Knit 2
Row 19: Knit 3, Purl 22, Knit 3
Row 20: Knit 2, Purl 1, Knit 22, Purl 1, Knit 2
Row 21: Knit 3, Purl 1, Knit 2, Purl 16, Knit 2, Purl 1, Knit 3
Row 22: Knit 2, Purl 1, Knit 1, Purl 3, Knit 14, Purl 3, Knit 1, Purl 1, Knit 2
Row 23: Knit 3, Purl 1, Knit 4, Purl 12, Knit 4, Purl 1, Knit 3
Row 24: Knit 2, Purl 1, Knit 1, Purl 4, Knit 12, Purl 4, Knit 1, Purl 1, Knit 2
Row 25: Knit 3, Purl 1, Knit 3, Purl 2, Knit 10, Purl 2, Knit 3, Purl 1, Knit 3
Row 26: Knit 2, Purl 1, Knit 1, Purl 2, Knit 2, Purl 12, Knit 2, Purl 2, Knit 1, Purl 1, Knit 2
Row 27: Knit 3, Purl 1, Knit 1, Purl 2, Knit 14, Purl 2, Knit 1, Purl 1, Knit 3
Row 28: Knit 2, Purl 1, Knit 2, Purl 18, Knit 2, Purl 1, Knit 2
Row 29: Knit 28
Row 30: Knit 2, Purl 24, Knit 2
Row 31: Knit 28
Row 32: Knit 2, Purl 24, Knit 2
Knit 4 more rows
Bind off



Bug:

Cast on 28 stitches

Knit 4 rows

Begin chart:

Row 1: Knit 28

Row 2: Knit 2, Purl 4, Knit 2, Purl 12, Knit 2, Purl 4, Knit 2

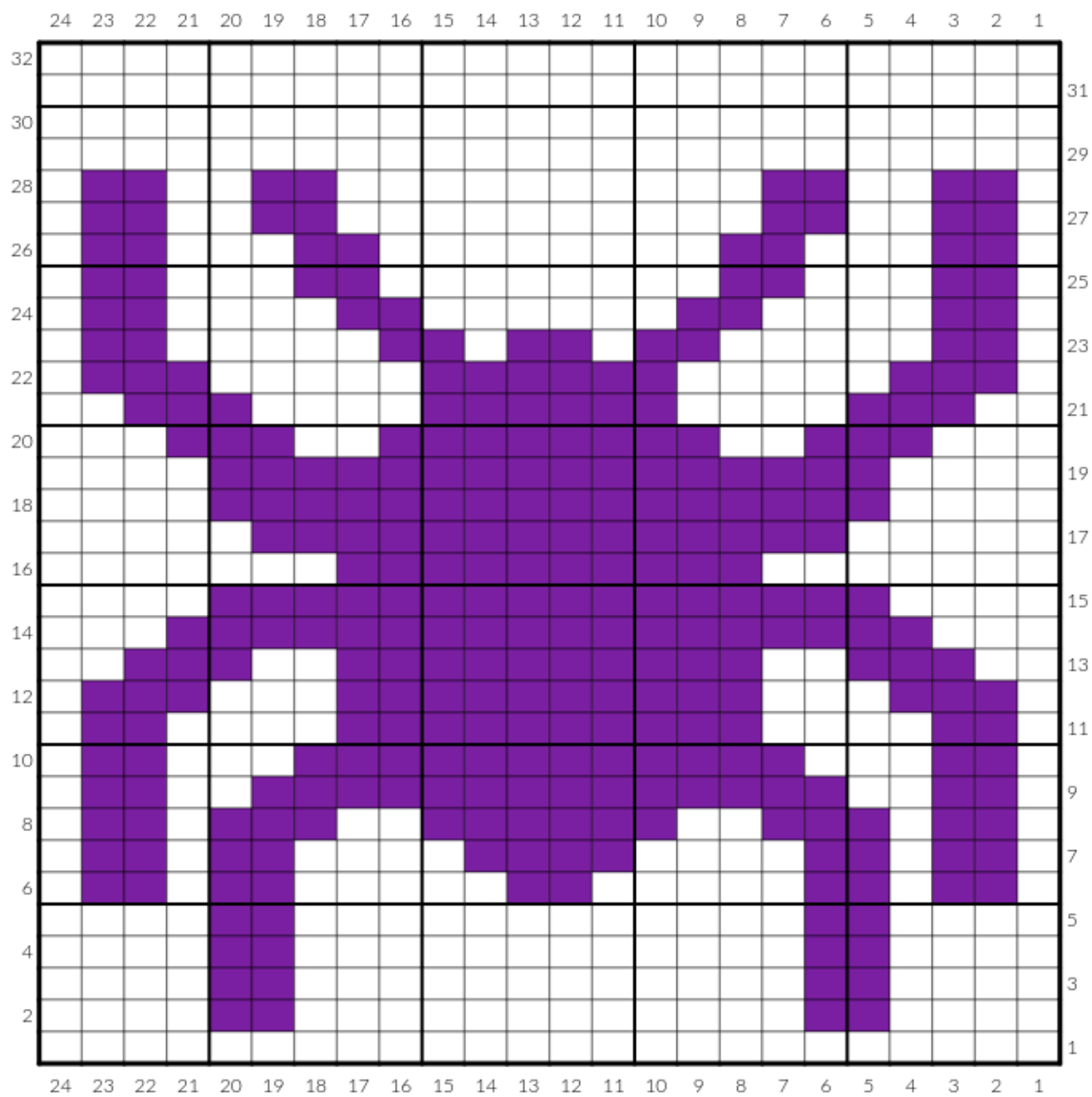
Row 3: Knit 6, Purl 2, Knit 12, Purl 2, Knit 6

Row 4: Knit 2, Purl 4, Knit 2, Purl 12, Knit 2, Purl 4, Knit 2

Row 5: Knit 6 Purl 2, Knit 12, Purl 2, Knit 6

Row 6: Knit 2, Purl 1, Knit 2, Purl 1, Knit 2, Purl 5, Knit 2, Purl 5, Knit 2, Purl 1, Knit 2, Purl 1, Knit 2

Row 7: Knit 3, Purl 2, Knit 1, Purl 2, Knit 4, Purl 4, Knit 4, Purl 2, Knit 1, Purl 2, Knit 3
Row 8: Knit 2, Purl 1, Knit 2, Purl 1, Knit 3, Purl 2, Knit 6, Purl 2, Knit 3, Purl 1, Knit 2, Purl 1, Knit 2
Row 9: Knit 3, Purl 2, Knit 2, Purl 14, Knit 2, Purl 2, Knit 3
Row 10: Knit 2, Purl 1, Knit 2, Purl 3, Knit 12, Purl 3, Knit 2, Purl 1, Knit 2
Row 11: Knit 3, Purl 2, Knit 4, Purl 10, Knit 4, Purl 2, Knit 3
Row 12: Knit 2, Purl 1, Knit 3, Purl 3, Knit 10, Purl 3, Knit 3, Purl 1, Knit 2
Row 13: Knit 4, Purl 3, Knit 2, Purl 10, Knit 2, Purl 3, Knit 4
Row 14: Knit 2, Purl 3, Knit 18, Purl 3, Knit 2
Row 15: Knit 6, Purl 16, Knit 6
Row 16: Knit 2, Purl 7, Knit 10, Purl 7, Knit 2
Row 17: Knit 7, Purl 14, Knit 7
Row 18: Knit 2, Purl 4, Knit 16, Purl 4, Knit 2
Row 19: Knit 6, Purl 16, Knit 6
Row 20: Knit 2, Purl 3, Knit 3, Purl 2, Knit 8, Purl 2, Knit 3, Purl 3, Knit 2
Row 21: Knit 4, Purl 3, Knit 4, Purl 6, Knit 4, Purl 3, Knit 4
Row 22: Knit 2, Purl 1, Knit 3, Purl 5, Knit 6, Purl 5, Knit 3, Purl 1, Knit 2
Row 23: Knit 3, Purl 2, Knit 5, Purl 2, Knit 1, Purl 2, Knit 1, Purl 2, Knit 5, Purl 2, Knit 3
Row 24: Knit 2, Purl 1, Knit 2, Purl 4, Knit 2, Purl 6, Knit 2, Purl 4, Knit 2, Purl 1, Knit 2
Row 25: Knit 3, Purl 2, Knit 3, Purl 2, Knit 8, Purl 2, Knit 3, Purl 2, Knit 3
Row 26: Knit 2, Purl 1, Knit 2, Purl 3, Knit 2, Purl 8, Knit 2, Purl 3, Knit 2, Purl 1, Knit 2
Row 27: Knit 3, Purl 2, Knit 2, Purl 2, Knit 10, Purl 2, Knit 2, Purl 2, Knit 3
Row 28: Knit 2, Purl 1, Knit 2, Purl 2, Knit 2, Purl 10, Knit 2, Purl 2, Knit 2, Purl 1, Knit 2
Row 29: Knit 28
Row 30: Knit 2, Purl 24, Knit 2
Row 31: Knit 28
Row 32: Knit 2, Purl 24, Knit 2
Knit 4 more rows
Bind off



Bird:

Cast on 28 stitches

Knit 4 rows

Begin chart:

Row 1: Knit 28

Row 2: Knit 2, Purl 24, Knit 2

Row 3: Knit 3, Purl 21, Knit 4

Row 4: Knit 2, Purl 2, Knit 21, Purl 1, Knit 2

Row 5: Knit 8, Purl 2, Knit 18

Row 6: Knit 2, Purl 16, Knit 2, Purl 6, Knit 2

Row 7: Knit 9, Purl 14, Knit 5

Row 8: Knit 2, Purl 3, Knit 13, Purl 8, Knit 2

Row 9: Knit 15, Purl 1, Knit 4, Purl 1, Knit 7

Row 10: Knit 2, Purl 6, Knit 1, Purl 4, Knit 1, Purl 12, Knit 2

Row 11: Knit 13, Purl 6, Knit 9

Row 12: Knit 2, Purl 6, Knit 8, Purl 10, Knit 2

Row 13: Knit 11, Purl 10, Knit 7

Row 14: Knit 2, Purl 4, Knit 15, Purl 5, Knit 2

Row 15: Knit 3, Purl 20, Knit 5

Row 16: Knit 2, Purl 2, Knit 19, Purl 3, Knit 2

Row 17: Knit 3, Purl 21, Knit 4

Row 18: Knit 2, Purl 2, Knit 15, Purl 7, Knit 2

Row 19: Knit 7, Purl 17, Knit 4

Row 20: Knit 2, Purl 2, Knit 18, Purl 4, Knit 2

Row 21: Knit , Purl 17, Knit 4

Row 22: Knit 2, Purl 3, Knit 13, Purl 8, Knit 2

Row 23: Knit 10, Purl 13, Knit 5

Row 24: Knit 2, Purl 4, Knit 11, Purl 9, Knit 2

Row 25: Knit 12, Purl 12, Knit 4

Row 26: Knit 2, Purl 4, Knit 2, Purl 2, Knit 6, Purl 10, Knit 2

Row 27: Knit 13, Purl 5, Knit 1, Purl 5, Knit 4

Row 28: Knit 2, Purl 5, Knit 8, Purl 11, Knit 2

Row 29: Knit 14, Purl 6, Knit 8

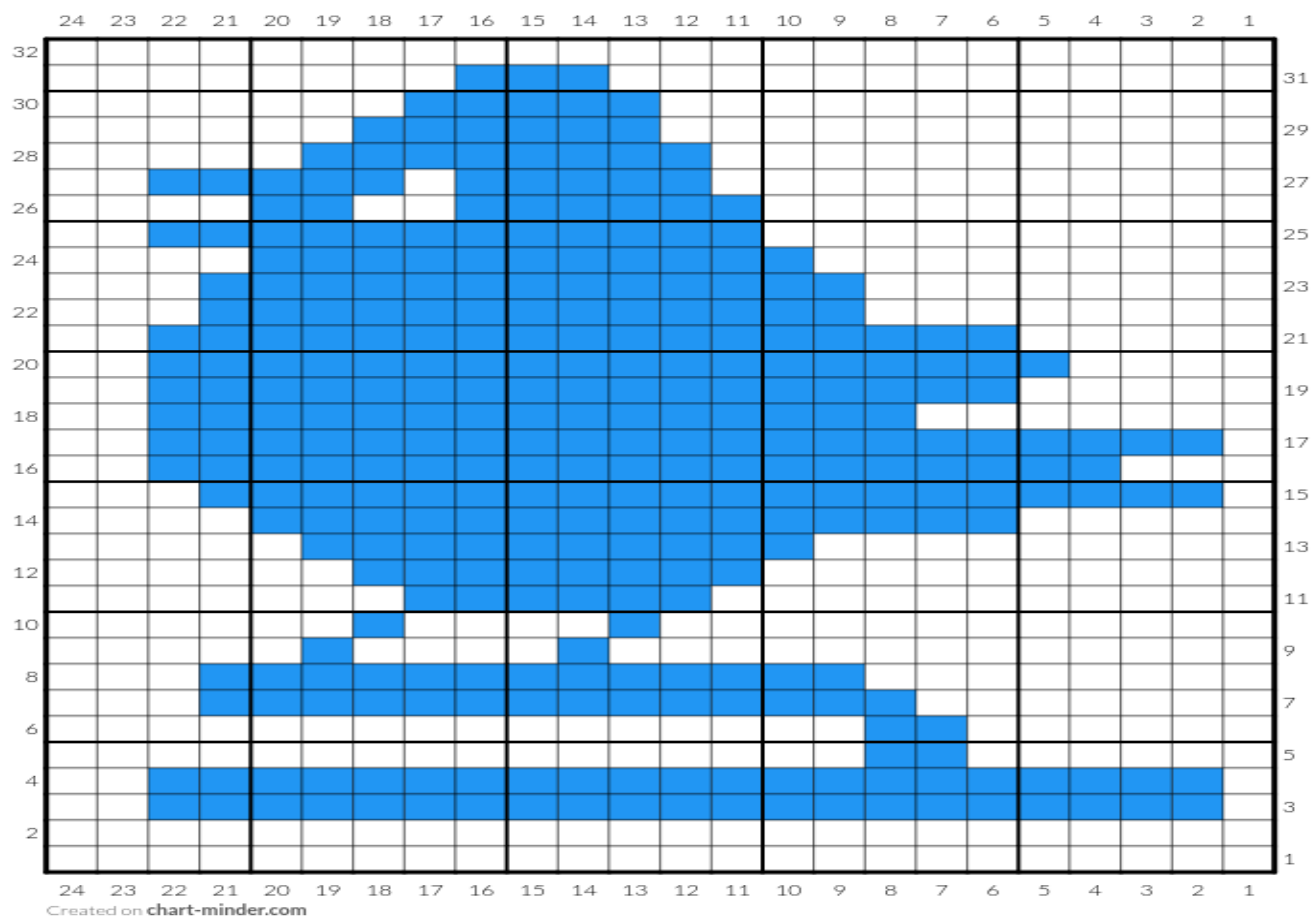
Row 30: Knit 2, Purl 7, Knit 5, Purl 12, Knit 2

Row 31: Knit 15, Purl 3, Knit 10

Row 32: Knit 2, Purl 24, Knit 2

Knit 4 more rows

Bind off



Akiko Name Kanji:

Cast on 28 stitches

Knit 4 rows

Begin chart:

Row 1: Knit 28

Row 2: Knit 2, Purl 24, Knit 2

Row 3: Knit 28

Row 4: Knit 2, Purl 24, Knit 2

Row 5: Knit 17, Purl 2, Knit 9

Row 6: Knit 2, Purl 8, Knit 2, Purl 7, Knit 5, Purl 2, Knit 2

Row 7: Knit 4, Purl 5, Knit 6, Purl 2, Knit 11

Row 8: Knit 2, Purl 10, Knit 2, Purl 8, Knit 2, Purl 2, Knit 2

Row 9: Knit 4, Purl 2, Knit 8, Purl 10, Knit 4

Row 10: Knit 2, Purl 2, Knit 8, Purl 1, Knit 11, Purl 2, Knit 2

Row 11: Knit 4, Purl 11, Knit 1, Purl 2, Knit 4, Purl 2, Knit 4

Row 12: Knit 2, Purl 2, Knit 2, Purl 4, Knit 2, Purl 1, Knit 2, Purl 7, Knit 2, Purl 2, Knit 2

Row 13: Knit 4, Purl 2, Knit 7, Purl 2, Knit 1, Purl 2, Knit 4, Purl 2, Knit 4

Row 14: Knit 2, Purl 2, Knit 2, Purl 4, Knit 2, Purl 1, Knit 2, Purl 7, Knit 2, Purl 2, Knit 2

Row 15: Knit 4, Purl 2, Knit 7, Purl 2, Knit 1, Purl 2, Knit 4, Purl 2, Knit 4
Row 16: Knit 2, Purl 2, Knit 2, Purl 4, Knit 2, Purl 1, Knit 2, Purl 7, Knit 2, Purl 2, Knit 2
Row 17: Knit 4, Purl 2, Knit 7, Purl 2, Knit 1, Purl 2, Knit 4, Purl 2, Knit 4
Row 18: Knit 2, Purl 2, Knit 8, Purl 1, Knit 2, Purl 7, Knit 2, Purl 2, Knit 2
Row 19: Knit 4, Purl 2, Knit 7, Purl 2, Knit 1, Purl 8, Knit 4
Row 20: Knit 2, Purl 2, Knit 2, Purl 4, Knit 2, Purl 1, Knit 11, Purl 2, Knit 2
Row 21: Knit 4, Purl 11, Knit 1, Purl 2, Knit 4, Purl 2, Knit 4
Row 22: Knit 2, Purl 2, Knit 2, Purl 4, Knit 2, Purl 1, Knit 2, Purl 7, Knit 2, Purl 2, Knit 2
Row 23: Knit 4, Purl 2, Knit 7, Purl 2, Knit 1, Purl 2, Knit 4, Purl 2, Knit 4
Row 24: Knit 2, Purl 2, Knit 2, Purl 4, Knit 2, Purl 1, Knit 2, Purl 7, Knit 2, Purl 2, Knit 2
Row 25: Knit 4, Purl 2, Knit 7, Purl 2, Knit 1, Purl 2, Knit 4, Purl 2, Knit 4
Row 26: Knit 2, Purl 2, Knit 2, Purl 4, Knit 2, Purl 1, Knit 2, Purl 7, Knit 2, Purl 2, Knit 2
Row 27: Knit 4, Purl 11, Knit 1, Purl 8, Knit 4
Row 28: Knit 2, Purl 2, Knit 8, Purl 1, Knit 11, Purl 2, Knit 2
Row 29: Knit 28
Row 30: Knit 2, Purl 24, Knit 2
Row 31: Knit 28
Row 32: Knit 2, Purl 24, Knit 2
Knit 4 more rows
Bind off

